

Performance Report for: <https://fusionantibodies.com/>

Report generated: Tue, Mar 12, 2024 11:21 PM -0700
 Test Server Location: London, UK
 Using: Chrome 117.0.0.0, Lighthouse 11.0.0

A	Performance	Structure	L. Contentful Paint	T. Blocking Time	C. Layout Shift
	86%	95%	2.3s	66ms	0.02

Top Issues

Med	Serve static assets with an efficient cache policy	Potential savings of 1.24MB
Med-Low	Use a Content Delivery Network (CDN)	21 resources found
Low	Preconnect to required origins <small>FCP LCP</small>	Potential savings of 152ms
Low	Avoid an excessive DOM size <small>TBT</small>	606 elements
Low	Avoid long main-thread tasks <small>TBT</small>	5 long tasks found

Page Details



Total Page Size - 1.52MB



Total Page Requests - 48



■ HTML
 ■ JS
 ■ CSS
 ■ IMG
 ■ Video
 ■ Font
 ■ Other

How does this affect me?

Today's web user expects a fast and seamless website experience. Delivering that fast experience can result in increased visits, conversions and overall happiness.

As if you didn't need more incentive, **Google has announced that they are using page speed in their ranking algorithm.**

About GTmetrix

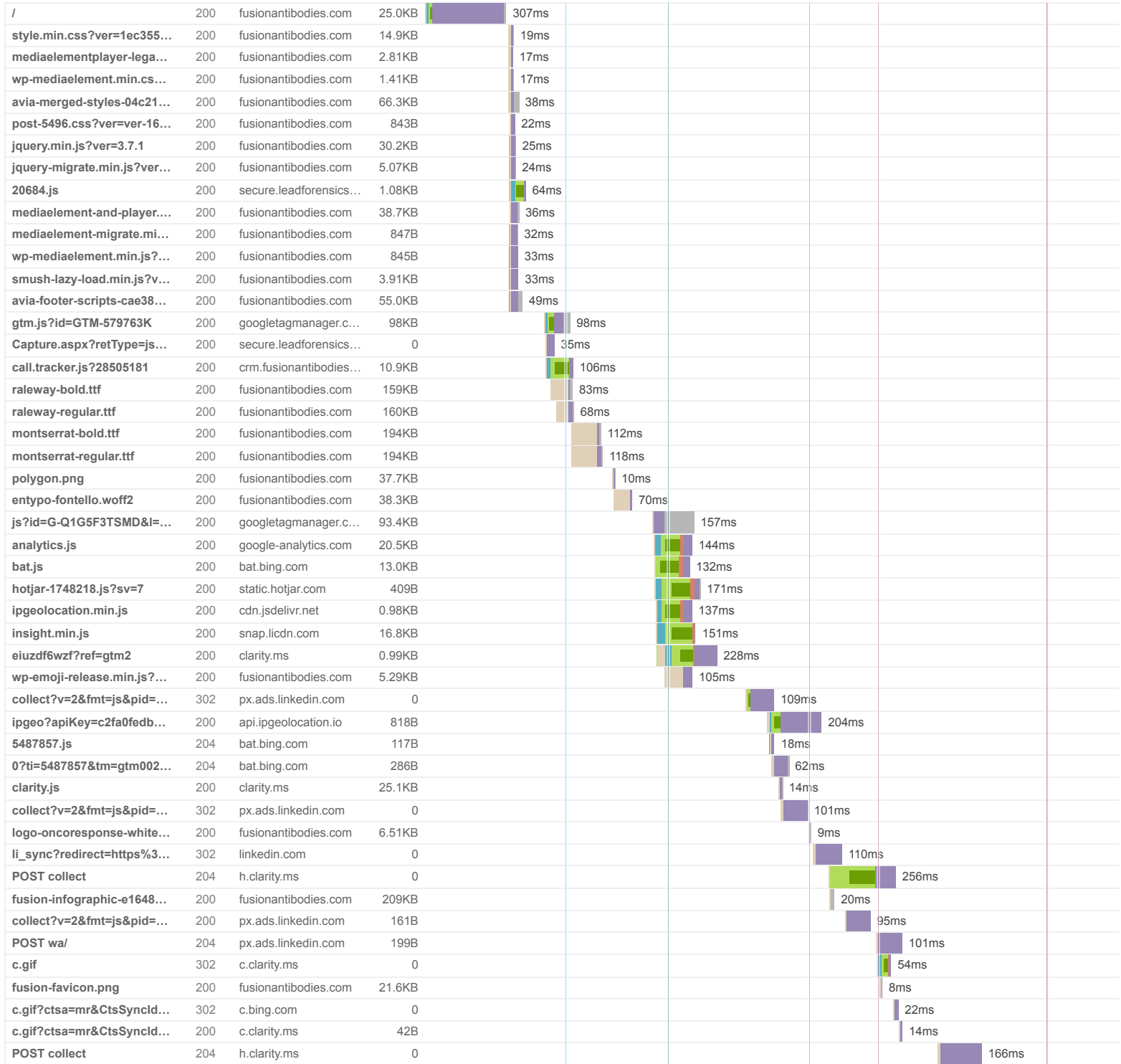


GTmetrix is developed by the good folks at **Carbon60**, a Canadian hosting company with over 28 years experience in web technology.

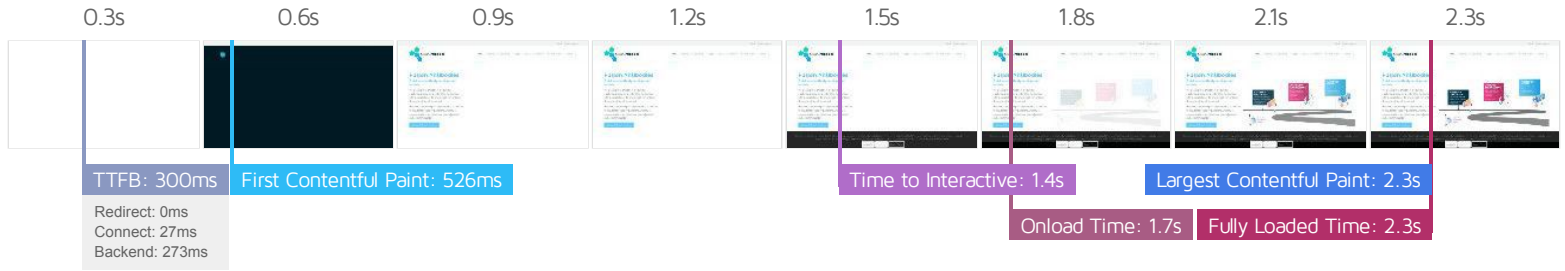
<https://carbon60.com/>

The waterfall chart displays the loading behaviour of your site in your selected browser. It can be used to discover simple issues such as 404's or more complex issues such as external resources blocking page rendering.

R&D Antibody Discovery Partner | Fusion Antibodies



48 Requests 1.52MB (2.90MB Uncompressed) Fully Loaded 2.3s (Onload 1.7s)



Performance Metrics

<p>First Contentful Paint</p> <p>How quickly content like text or images are painted onto your page. A good user experience is 0.9s or less.</p>	<p>Good - Nothing to do here</p> <p>525ms</p>	<p>Time to Interactive</p> <p>How long it takes for your page to become fully interactive. A good user experience is 2.5s or less.</p>	<p>Good - Nothing to do here</p> <p>1.4s</p>
<p>Speed Index</p> <p>How quickly the contents of your page are visibly populated. A good user experience is 1.3s or less.</p>	<p>OK, but consider improvement</p> <p>1.4s</p>	<p>Total Blocking Time</p> <p>How much time is blocked by scripts during your page loading process. A good user experience is 150ms or less.</p>	<p>Good - Nothing to do here</p> <p>66ms</p>
<p>Largest Contentful Paint</p> <p>How long it takes for the largest element of content (e.g. a hero image) to be painted on your page. A good user experience is 1.2s or less.</p>	<p>Longer than recommended</p> <p>2.3s</p>	<p>Cumulative Layout Shift</p> <p>How much your page's layout shifts as it loads. A good user experience is a score of 0.1 or less.</p>	<p>Good - Nothing to do here</p> <p>0.02</p>

Browser Timings

Redirect	0ms	Connect	27ms	Backend	273ms
TTFB	300ms	First Paint	526ms	DOM Int.	905ms
DOM Loaded	915ms	Onload	1.7s	Fully Loaded	2.3s

IMPACT AUDIT

Low **Reduce JavaScript execution time** TBT 560ms spent executing JavaScript

Consider reducing the time spent parsing, compiling, and executing JS. You may find delivering smaller JS payloads helps with this.

URL	TOTAL CPU TIME	SCRIPT EVALUATION	SCRIPT PARSE
• https://fusionantibodies.com/	360ms	69ms	3ms
• https://fusionantibodies.com/wp-includes/js/jquery/jquery.min.js?ver=3.7.1	295ms	195ms	1ms
• Unattributable	204ms	14ms	0ms
• https://www.clarity.ms/s/0.7.24/clarity.js	124ms	99ms	4ms
• https://fusionantibodies.com/wp-content/plugins/wp-smushit/app/assets/js/smush-lazy-load.min.js?ver=3.15.5	118ms	17ms	0ms
• https://www.googletagmanager.com/gtm.js?id=GTM-579763K	94ms	83ms	4ms
• https://www.googletagmanager.com/gtag/js?id=G-Q1G5F3TSMD&l=dataLayer&cx=c	68ms	61ms	4ms

Low **Avoid enormous network payloads** LCP Total size was 1.53MB

Large network payloads cost users real money and are highly correlated with long load times.

URL	TRANSFER SIZE
• https://fusionantibodies.com/wp-content/uploads/fusion-infographic-e1648207495704-1500x802.png	210KB
• https://fusionantibodies.com/wp-content/uploads/avia_fonts/type_fonts/static/montserrat-bold.ttf	194KB
• https://fusionantibodies.com/wp-content/uploads/avia_fonts/type_fonts/static/montserrat-regular.ttf	194KB
• https://fusionantibodies.com/wp-content/uploads/avia_fonts/type_fonts/ralewayg/raleway-regular.ttf	160KB
• https://fusionantibodies.com/wp-content/uploads/avia_fonts/type_fonts/ralewayg/raleway-bold.ttf	160KB
• https://www.googletagmanager.com/gtm.js?id=GTM-579763K	98KB
• https://www.googletagmanager.com/gtag/js?id=G-Q1G5F3TSMD&l=dataLayer&cx=c	93.5KB
• https://fusionantibodies.com/wp-content/uploads/dynamic_avia/avia-merged-styles-04c21fe338635bf388dd5e6a249b0a18--642e622716b9a.css	66.3KB
• https://fusionantibodies.com/wp-content/uploads/dynamic_avia/avia-footer-scripts-cae38c9d3f2827fe8737a48647941c63--642e622779d47.js	55.0KB
• https://fusionantibodies.com/wp-includes/js/mediaelement/mediaelement-and-player.min.js?ver=4.2.17	38.7KB

Low **Properly size images** Potential savings of 150KB

Serve images that are appropriately-sized to save cellular data and improve load time.

URL	RESOURCE SIZE	POTENTIAL SAVINGS
https://fusionantibodies.com/wp-content/uploads/fusion-infographic-e1648207495704-1500x802.png	209KB	150KB

Low **Ensure text remains visible during webfont load** FCP LCP 5 fonts found

Leverage the `font-display` CSS feature to ensure text is user-visible while webfonts are loading.

URL	POTENTIAL SAVINGS
• https://fusionantibodies.com/wp-content/uploads/avia_fonts/type_fonts/ralewayg/raleway-bold.ttf	19ms
• https://fusionantibodies.com/wp-content/uploads/avia_fonts/type_fonts/ralewayg/raleway-regular.ttf	23ms
• https://fusionantibodies.com/wp-content/uploads/avia_fonts/type_fonts/static/montserrat-bold.ttf	15ms
• https://fusionantibodies.com/wp-content/uploads/avia_fonts/type_fonts/static/montserrat-regular.ttf	21ms
• https://fusionantibodies.com/wp-content/themes/enfold/config-templatebuilder/avia-template-builder/assets/fonts/entypo-fontello.woff2	9ms

Low **Reduce unused CSS** FCP LCP Potential savings of 71.9KB

Reduce unused rules from stylesheets and defer CSS not used for above-the-fold content to decrease bytes consumed by network activity.

URL	TRANSFER SIZE	POTENTIAL SAVINGS
• https://fusionantibodies.com/wp-content/uploads/dynamic_avia/avia-merged-styles-04c21fe338635bf388dd5e6a249b0a18---642e622716b9a.css	66.3KB	57.1KB
• https://fusionantibodies.com/wp-includes/css/dist/block-library/style.min.css?ver=1ec355cd2ebc558e5f7075bb7b23bbd7	14.9KB	14.8KB

Low **Serve images in next-gen formats** Potential savings of 190KB

Image formats like WebP and AVIF often provide better compression than PNG or JPEG, which means faster downloads and less data consumption.

URL	RESOURCE SIZE	POTENTIAL SAVINGS
https://fusionantibodies.com/wp-content/uploads/fusion-infographic-e1648207495704-1500x802.png	209KB	161KB
https://fusionantibodies.com/wp-content/themes/enfold/images/background-images/polygon.png	37.7KB	29.9KB

Low **Reduce initial server response time** FCP LCP Root document took 272ms

Keep the server response time for the main document short because all other requests depend on it.

URL	TIME SPENT
• https://fusionantibodies.com/	272ms

Low **Defer offscreen images** Potential savings of 37.7KB

Consider lazy-loading offscreen and hidden images after all critical resources have finished loading to lower time to interactive.

URL	RESOURCE SIZE	POTENTIAL SAVINGS
https://fusionantibodies.com/wp-content/themes/enfold/images/background-images/polygon.png	37.7KB	37.7KB

Low **Avoid non-composited animations** CLS 4 animated elements found

Animations which are not composited can be janky and increase CLS.

ELEMENT

NAME

Hi, like all websites we use cookies! Cookies allow us to help make your time o...

```
<div class="avia-cookie-consent avia-cookiemessage-bottom" aria-hidden="false" data-contents="0656293e3c4fdefc468b13b3866a37d0|v1.0">
```

Unsupported CSS Property: visibility

visibility

Unsupported CSS Property: bottom

bottom

Reject All

```
<a href="#" class="avia-button avia-color-theme-color-highlight avia-cookie-consent-button av...">
```

Unsupported CSS Property: visibility

visibility

Privacy Policy

```
<a href="/privacy-policy" class="avia-button avia-color-theme-color-highlight avia-cookie-consent-button av...">
```

Unsupported CSS Property: visibility

visibility

Accept All

```
<a href="#" class="avia-button avia-color-theme-color-highlight avia-cookie-consent-button av...">
```

Unsupported CSS Property: visibility

visibility

Low

Avoid chaining critical requests

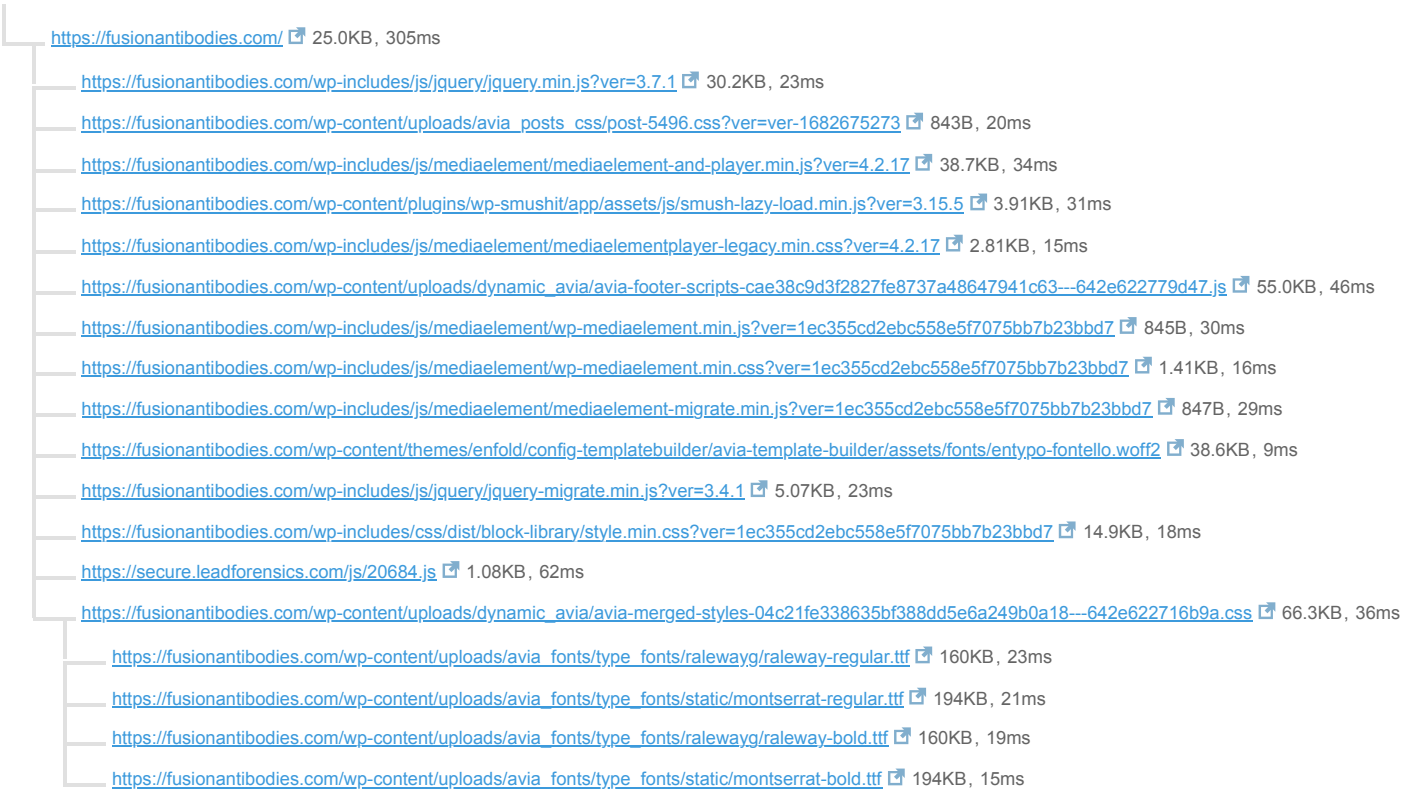
FCP LCP

17 chains found

The Critical Request Chains below show you what resources are loaded with a high priority. Consider reducing the length of chains, reducing the download size of resources, or deferring the download of unnecessary resources to improve page load.

Maximum critical path latency: 781ms

INITIAL NAVIGATION



Low

Reduce unused JavaScript

LCP

Potential savings of 146KB

Reduce unused JavaScript and defer loading scripts until they are required to decrease bytes consumed by network activity.

URL	TRANSFER SIZE	POTENTIAL SAVINGS
https://www.googletagmanager.com/gtm.js?id=GTM-579763K	98KB	40.3KB
https://www.googletagmanager.com/gtag/js?id=G-Q1G5F3TSMD&l=dataLayer&cx=c	93.5KB	39.9KB
https://fusionantibodies.com/wp-content/uploads/dynamic_avia/avia-footer-scripts-cae38c9d3f2827fe8737a48647941c63--642e622779d47.js	55.0KB	33.8KB
https://fusionantibodies.com/wp-includes/js/mediaelement/mediaelement-and-player.min.js?ver=4.2.17	38.7KB	31.6KB

N/A **Largest Contentful Paint element** LCP

2,350 ms

This is the largest contentful element painted within the viewport.

ELEMENT

Fusion Antibodies Journey to the Clinic Infographic

```

```

PHASE	% OF LCP	TIMING
TTFB	13%	300ms
Load Delay	52%	1.2s
Load Time	1%	19ms
Render Delay	34%	797ms

N/A **Eliminate render-blocking resources** FCP LCP

Potential savings of 23ms

Resources are blocking the first paint of your page. Consider delivering critical JS/CSS inline and deferring all non-critical JS/styles.

Resources that **may** be contributing to render-blocking include:

URL	TRANSFER SIZE	DOWNLOAD TIME
https://fusionantibodies.com/wp-includes/js/mediaelement/wp-mediaelement.min.css?ver=1ec355cd2ebc558e5f7075bb7b23bbd7	1.41KB	151ms
https://fusionantibodies.com/wp-content/uploads/dynamic_avia/avia-merged-styles-04c21fe338635bf388dd5e6a249b0a18--642e622716b9a.css	66.3KB	753ms
https://fusionantibodies.com/wp-includes/js/jquery/jquery.min.js?ver=3.7.1	30.2KB	151ms
https://fusionantibodies.com/wp-includes/js/jquery/jquery-migrate.min.js?ver=3.4.1	5.07KB	151ms
https://secure.leadforensics.com/js/20684.js	1.08KB	766ms

N/A **Avoid serving legacy JavaScript to modern browsers** TBT

Potential savings of 7.19KB

Polyfills and transforms enable legacy browsers to use new JavaScript features. However, many aren't necessary for modern browsers. For your bundled JavaScript, adopt a modern script deployment strategy using module/nomodule feature detection to reduce the amount of code shipped to modern browsers, while retaining support for legacy browsers.

URL	POTENTIAL SAVINGS
https://fusionantibodies.com/wp-content/uploads/dynamic_avia/avia-footer-scripts-cae38c9d3f2827fe8737a48647941c63---642e622779d47.js	7.08KB
Line:0 Column:20	<code>Array.isArray</code>
https://snap.licdn.com/li.lms-analytics/insight.min.js	59B
Line:0 Column:680	<code>@babel/plugin-transform-classes</code>
https://fusionantibodies.com/wp-includes/js/mediaelement/mediaelement-and-player.min.js?ver=4.2.17	55B
Line:11 Column:12531	<code>@babel/plugin-transform-classes</code>

N/A **Avoid large layout shifts** CLS 4 elements found

These DOM elements contribute most to the CLS of the page.

ELEMENT	CLS CONTRIBUTION
What our clients say "One of the humanized antibodies you designed for us has ... <div id="av_section_2" class="avia-section av-5qddy0-ac28740e8228a4e2184a89c185a96a04 alternate_color av...">	0.02
Hi, like all websites we use cookies! Cookies allow us to help make your time o... <div class="avia-cookie-consent avia-cookiemessage-bottom" aria-hidden="false" data-contents="0656293e3c4fdefc468b13b3866a37d0 v1.0">	0.00
Home Discovery Engineering Supply Cell Line Development News & Insights Contact... <div class="avia-menu av-main-nav-wrap">	0.00
ul#avia-menu > li#menu-item-5549 > a > span.avia-menu-fx 	0.00

N/A **Minimize main-thread work** TBT Main-thread busy for 1.5s

Consider reducing the time spent parsing, compiling and executing JS. You may find delivering smaller JS payloads helps with this.

CATEGORY	TIME SPENT
Script Evaluation	668ms
Other	363ms
Style & Layout	288ms
Parse HTML & CSS	77ms
Script Parsing & Compilation	33ms
Rendering	27ms
Garbage Collection	12ms

Third-party code can significantly impact load performance. Limit the number of redundant third-party providers and try to load third-party code after your page has primarily finished loading.

THIRD-PARTY	TRANSFER SIZE	MAIN-THREAD BLOCKING TIME
GOOGLE TAG MANAGER	192KB	6ms
• https://www.googletagmanager.com/gtag/js?id=G-Q1G5F3TSMD&l=dataLayer&cx=c	93.5KB	6ms
• https://www.googletagmanager.com/gtm.js?id=GTM-579763K	98KB	0ms
CLARITY	27.9KB	0ms
• https://www.clarity.ms/s/0.7.24/clarity.js	25.1KB	0ms
GOOGLE ANALYTICS	20.8KB	0ms
• https://www.google-analytics.com/analytics.js	20.8KB	0ms
LINKEDIN ADS	19.7KB	0ms
• https://snap.licdn.com/li.lms-analytics/insight.min.js	17.0KB	0ms
BING ADS	14.4KB	0ms
• https://bat.bing.com/bat.js	13.4KB	0ms
JSDELIVR CDN	1.45KB	0ms
LEAD FORENSICS	1.24KB	0ms
IPGEOLOCATION.IO	818B	0ms
HOTJAR	409B	0ms

No user timings and/or marks found.