



Performance Report for: <http://www.bespokebritain.com/>

Report generated: Sat, Mar 9, 2024 5:27 AM -0800
 Test Server Location: London, UK
 Using: Chrome 117.0.0.0, Lighthouse 11.0.0

B	Performance	Structure	L. Contentful Paint	T. Blocking Time	C. Layout Shift
	86%	85%	1.8s	0ms	0.01

Top Issues

High	Reduce initial server response time <small>FCP LCP</small>	Root document took 693ms
Med	Use explicit width and height on image elements <small>CLS</small>	1 image found
Med	Serve static assets with an efficient cache policy	Potential savings of 2.83MB
Med-Low	Eliminate render-blocking resources <small>FCP LCP</small>	Potential savings of 329ms
Med-Low	Use a Content Delivery Network (CDN)	22 resources found

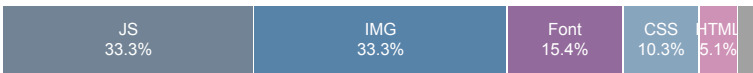
Page Details



Total Page Size - 3.01MB



Total Page Requests - 39



Legend: HTML JS CSS IMG Video Font Other

How does this affect me?

Today's web user expects a fast and seamless website experience. Delivering that fast experience can result in increased visits, conversions and overall happiness.

As if you didn't need more incentive, **Google has announced that they are using page speed in their ranking algorithm.**

About GTmetrix

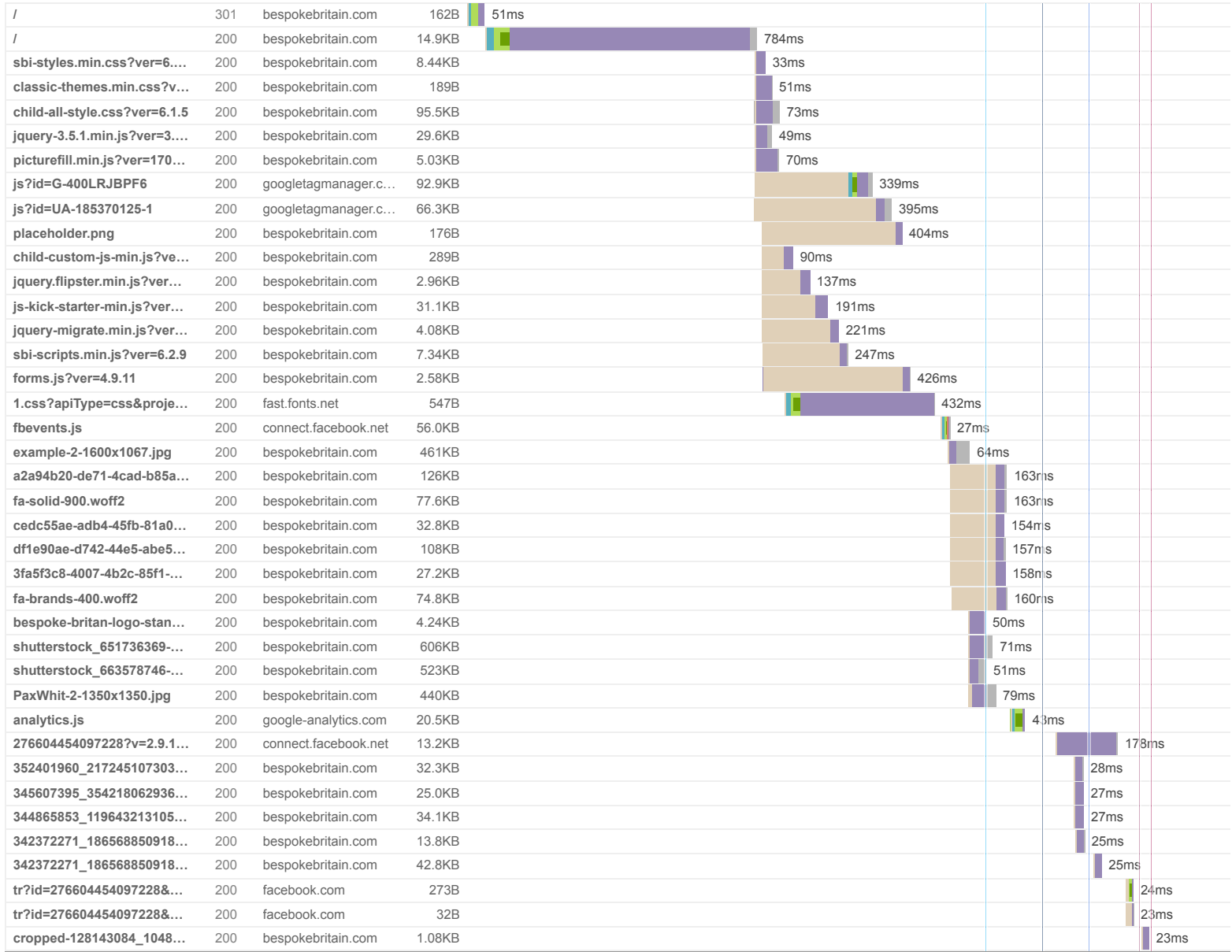
GTmetrix is developed by the good folks at **CARBON60**, a Canadian hosting company with over 28 years experience in web technology.



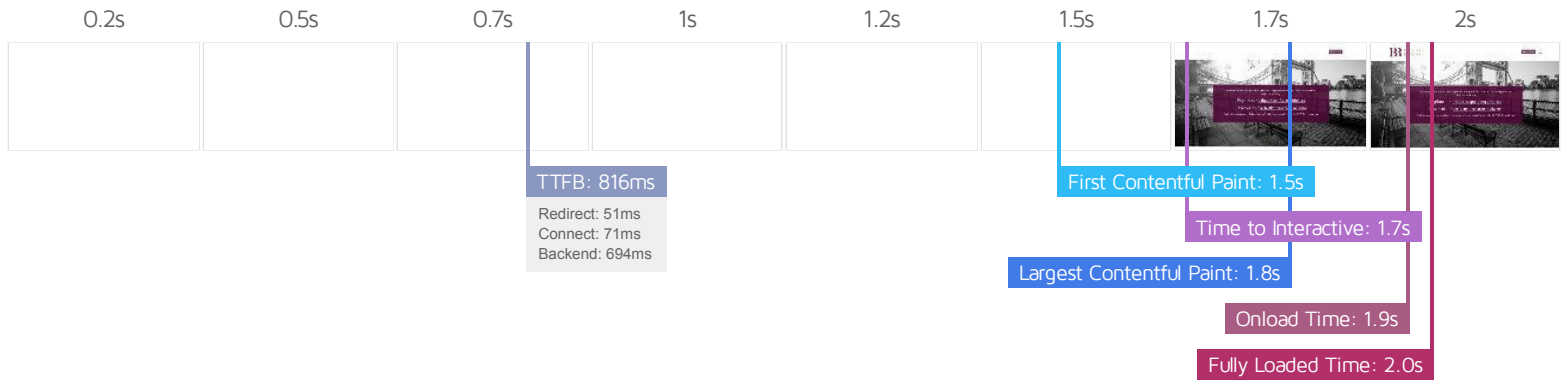
<https://carbon60.com/>

The waterfall chart displays the loading behaviour of your site in your selected browser. It can be used to discover simple issues such as 404's or more complex issues such as external resources blocking page rendering.

Home - Bespoke Britain



39 Requests	3.01MB (5.18MB Uncompressed)	Fully Loaded 2s (Onload 1.9s)
--------------------	-------------------------------------	--------------------------------------



Performance Metrics

<p>First Contentful Paint</p> <p>How quickly content like text or images are painted onto your page. A good user experience is 0.9s or less.</p>	<p>Longer than recommended</p> <p>1.5s</p>	<p>Time to Interactive</p> <p>How long it takes for your page to become fully interactive. A good user experience is 2.5s or less.</p>	<p>Good - Nothing to do here</p> <p>1.7s</p>
<p>Speed Index</p> <p>How quickly the contents of your page are visibly populated. A good user experience is 1.3s or less.</p>	<p>OK, but consider improvement</p> <p>1.6s</p>	<p>Total Blocking Time</p> <p>How much time is blocked by scripts during your page loading process. A good user experience is 150ms or less.</p>	<p>Good - Nothing to do here</p> <p>0ms</p>
<p>Largest Contentful Paint</p> <p>How long it takes for the largest element of content (e.g. a hero image) to be painted on your page. A good user experience is 1.2s or less.</p>	<p>Longer than recommended</p> <p>1.8s</p>	<p>Cumulative Layout Shift</p> <p>How much your page's layout shifts as it loads. A good user experience is a score of 0.1 or less.</p>	<p>Good - Nothing to do here</p> <p>0.01</p>

Browser Timings

Redirect	51ms	Connect	71ms	Backend	694ms
TTFB	816ms	First Paint	1.5s	DOM Int.	1.6s
DOM Loaded	1.7s	Onload	1.9s	Fully Loaded	2.0s

IMPACT AUDIT

Med-Low

Avoid enormous network payloads LCP

Total size was 3.02MB

Large network payloads cost users real money and are highly correlated with long load times.

URL	TRANSFER SIZE
https://bespokebritain.com/wp-content/uploads/2020/11/shutterstock_651736369-1350x1350.jpg	606KB
https://bespokebritain.com/wp-content/uploads/2020/11/shutterstock_663578746-1350x1350.jpg	524KB
https://bespokebritain.com/wp-content/uploads/2020/10/example-2-1600x1067.jpg	461KB
https://bespokebritain.com/wp-content/uploads/2020/11/PaxWhit-2-1350x1350.jpg	440KB
https://bespokebritain.com/wp-content/themes/polaris-framework-child/child-stylesheets/fonts/a2a94b20-de71-4cad-b85a-50517fcd9130.woff2	126KB
https://bespokebritain.com/wp-content/themes/polaris-framework-child/child-stylesheets/fonts/df1e90ae-d742-44e5-abe5-bdc31452ef73.woff2	108KB
https://bespokebritain.com/wp-content/themes/polaris-framework-child/child-stylesheets/child-all-style.css?ver=6.1.5	95.5KB
https://www.googletagmanager.com/gtag/js?id=G-400LRJBPF6	93.3KB
https://bespokebritain.com/wp-content/themes/polaris-framework/stylesheets/font-awesome/fontawesome-free-5.13.0-web/webfonts/fa-solid-900.woff2	77.8KB
https://bespokebritain.com/wp-content/themes/polaris-framework/stylesheets/font-awesome/fontawesome-free-5.13.0-web/webfonts/fa-brands-400.woff2	75.1KB

Med-Low

Avoid CSS @import FCP LCP

1 resource found

Using CSS @import in an external stylesheet can add additional delays during the loading of a web page.

STYLESHEETS WITH @IMPORT STATEMENTS AND THE STYLESHEETS THEY IMPORT

- <https://bespokebritain.com/wp-content/themes/polaris-framework-child/child-stylesheets/child-all-style.css?ver=6.1.5>
- <https://fast.fonts.net/t/1.css?apiType=css&projectid=30e89199-a378-4f64-9571-bcaaa7158661>

Low

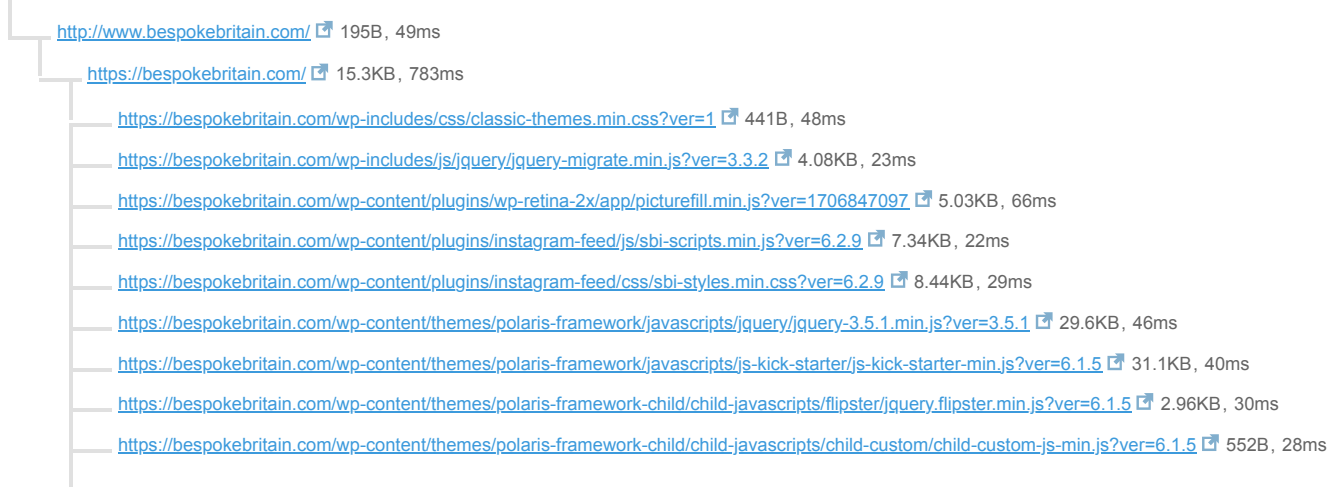
Avoid chaining critical requests FCP LCP

16 chains found

The Critical Request Chains below show you what resources are loaded with a high priority. Consider reducing the length of chains, reducing the download size of resources, or deferring the download of unnecessary resources to improve page load.

Maximum critical path latency: **1.6s**

INITIAL NAVIGATION



<https://bespokebritain.com/wp-content/themes/polaris-framework-child/child-stylesheets/child-all-style.css?ver=6.1.5> 95.5KB, 70ms

<https://fast.fonts.net/v1/css?apiType=css&projectId=30e89199-a378-4f64-9571-bcaaa7158661> 547B, 431ms

<https://bespokebritain.com/wp-content/themes/polaris-framework-child/child-stylesheets/fonts/3fa5f3c8-4007-4b2c-85f1-17f13f20f374.woff2> 27.4KB, 29ms

<https://bespokebritain.com/wp-content/themes/polaris-framework/stylesheets/font-awesome/fontawesome-free-5.13.0-web/webfonts/fa-solid-900.woff2> 77.8KB, 33ms

<https://bespokebritain.com/wp-content/themes/polaris-framework-child/child-stylesheets/fonts/cedc55ae-adb4-45fb-81a0-cf0cb71ea069.woff2> 33.0KB, 25ms

<https://bespokebritain.com/wp-content/themes/polaris-framework-child/child-stylesheets/fonts/a2a94b20-de71-4cad-b85a-50517fcd9130.woff2> 126KB, 34ms

<https://bespokebritain.com/wp-content/themes/polaris-framework-child/child-stylesheets/fonts/df1e90ae-d742-44e5-abe5-bdc31452ef73.woff2> 108KB, 28ms

<https://bespokebritain.com/wp-content/themes/polaris-framework/stylesheets/font-awesome/fontawesome-free-5.13.0-web/webfonts/fa-brands-400.woff2> 75.1KB, 33ms

Low

Avoid an excessive DOM size TBT

400 elements

A large DOM will increase memory usage, cause longer style calculations, and produce costly layout reflows.

STATISTIC	ELEMENT	VALUE
Total DOM Elements		400
Maximum DOM Depth	<code>div.col-10 > div.parallax-inner > h5 > br</code> <code>
</code>	14
Maximum Child Elements	<code>body.home</code> <code><body class="home page-template page-template-template-building-blocks-better page-temp..."></code>	12

Low

Properly size images

Potential savings of 1.43MB

Serve images that are appropriately-sized to save cellular data and improve load time.

URL	RESOURCE SIZE	POTENTIAL SAVINGS
https://bespokebritain.com/wp-content/uploads/2020/11/shutterstock_651736369-1350x1350.jpg	606KB	565KB
https://bespokebritain.com/wp-content/uploads/2020/11/shutterstock_663578746-1350x1350.jpg	523KB	488KB
https://bespokebritain.com/wp-content/uploads/2020/11/PaxWhit-2-1350x1350.jpg	440KB	410KB

Low

Avoid multiple page redirects FCP LCP

Potential savings of 50ms

Redirects introduce additional delays before the page can be loaded.

URL	TIME SPENT
<ul style="list-style-type: none">http://www.bespokebritain.com/	50ms
<ul style="list-style-type: none">https://bespokebritain.com/	0ms

Low

Efficiently encode images

Potential savings of 243KB

Optimized images load faster and consume less cellular data.

URL	RESOURCE SIZE	POTENTIAL SAVINGS
https://bespokebritain.com/wp-content/uploads/2020/11/shutterstock_651736369-1350x1350.jpg	606KB	97.6KB
https://bespokebritain.com/wp-content/uploads/2020/11/shutterstock_663578746-1350x1350.jpg	523KB	73.8KB
https://bespokebritain.com/wp-content/uploads/2020/11/PaxWhit-2-1350x1350.jpg	440KB	71.5KB

Low

Avoid long main-thread tasks TBT

1 long task found

Lists the longest tasks on the main thread, useful for identifying worst contributors to input delay.

URL	START TIME	DURATION
• https://bespokebritain.com/	1.4s	79ms

Low

Reduce JavaScript execution time TBT

174ms spent executing JavaScript

Consider reducing the time spent parsing, compiling, and executing JS. You may find delivering smaller JS payloads helps with this.

URL	TOTAL CPU TIME	SCRIPT EVALUATION	SCRIPT PARSE
• https://bespokebritain.com/	459ms	17ms	2ms
• https://bespokebritain.com/wp-content/themes/polaris-framework/javascripts/jquery/jquery-3.5.1.min.js?ver=3.5.1	236ms	80ms	1ms
• Unattributable	183ms	8ms	0ms
• https://www.googletagmanager.com/gtag/js?id=G-400LRJBPF6	67ms	58ms	5ms

Low

Reduce unused CSS FCP LCP

Potential savings of 93.6KB

Reduce unused rules from stylesheets and defer CSS not used for above-the-fold content to decrease bytes consumed by network activity.

URL	TRANSFER SIZE	POTENTIAL SAVINGS
• https://bespokebritain.com/wp-content/themes/polaris-framework-child/child-stylesheets/child-all-style.css?ver=6.1.5	95.5KB	93.6KB

Low

Serve images in next-gen formats

Potential savings of 1.15MB

Image formats like WebP and AVIF often provide better compression than PNG or JPEG, which means faster downloads and less data consumption.

URL	RESOURCE SIZE	POTENTIAL SAVINGS
https://bespokebritain.com/wp-content/uploads/2020/11/shutterstock_651736369-1350x1350.jpg	606KB	351KB
https://bespokebritain.com/wp-content/uploads/2020/11/shutterstock_663578746-1350x1350.jpg	523KB	305KB
https://bespokebritain.com/wp-content/uploads/2020/11/PaxWhit-2-1350x1350.jpg	440KB	277KB
https://bespokebritain.com/wp-content/uploads/2020/10/example-2-1600x1067.jpg	461KB	212KB
https://bespokebritain.com/wp-content/uploads/sb-instagram-feed-images/342372271_186568850918662_7274746150793933386_nfull.jpg	42.8KB	15.5KB
https://bespokebritain.com/wp-content/uploads/sb-instagram-feed-images/352401960_217245107303006_9005605554891643610_nlow.jpg	32.3KB	10.2KB
https://bespokebritain.com/wp-content/uploads/sb-instagram-feed-images/344865853_1196432131056206_1399692989389456470_nlow.jpg	34.1KB	9.8KB

Reduce unused JavaScript and defer loading scripts until they are required to decrease bytes consumed by network activity.

URL	TRANSFER SIZE	POTENTIAL SAVINGS
https://www.googletagmanager.com/gtag/js?id=G-400LRJBPF6	93.3KB	39.5KB
https://www.googletagmanager.com/gtag/js?id=UA-185370125-1	66.4KB	33.6KB
https://bespokebritain.com/wp-content/themes/polaris-framework/javascrpts/js-kick-starter/js-kick-starter-min.js?ver=6.1.5	31.1KB	20.3KB
../stylesheets/bootstrap/bootstrap-4.3.1-dist/js/bootstrap.min.js	14.9KB	10.2KB
../isotope/isotope.pkgd.js	9.06KB	6.08KB
../ekko-lightbox/ekko-lightbox.js	3.91KB	3.40KB

This is the largest contentful element painted within the viewport.

ELEMENT

Welcome to Bespoke Britain, specialists in premium tour and travel experiences....

```
<div class="parallax-image parallax-height-80 center-vertical" style="background-image: url (&quot;https://bespokebritain.com/wp-content/uploads/2020/...&quot;); " data-2x="">
```

PHASE	% OF LCP	TIMING
TTFB	46%	816ms
Load Delay	32%	571ms
Load Time	3%	62ms
Render Delay	19%	334ms

Polyfills and transforms enable legacy browsers to use new JavaScript features. However, many aren't necessary for modern browsers. For your bundled JavaScript, adopt a modern script deployment strategy using module/nomodule feature detection to reduce the amount of code shipped to modern browsers, while retaining support for legacy browsers.

URL

POTENTIAL SAVINGS

https://connect.facebook.net/en_US/fbevents.js

10.8KB

Line:23 Column:2302

@babel/plugin-transform-orm-classes

Line:24 Column:20141

Array.prototype.filter

Line:24 Column:26258

Array.from

Line:24 Column:28008

Array.prototype.map

Line:24 Column:28800

Array.prototype.find

https://connect.facebook.net/signals/config/276604454097228?v=2.9.148&r=stable&domain=bespokebritain.com&hme=20c913bdcd4be51a752120153aa5caaecb3ee86c7f26cf737846e40b202aba68&ex_m=62%2C106%2C94%2C98%2C53%2C3%2C88%2C61%2C14%2C86%2C79%2C44%2C46%2C150%2C153%2C164%2C160%2C161%2C163%2C25%2C89%2C45%2C68%2C162%2C145%2C148%2C157%2C158%2C165%2C115%2C13%2C43%2C169%2C168%2C117%2C16%2C29%2C32%2C1%2C36%2C57%2C58%2C59%2C63%2C83%2C15%2C12%2C85%2C82%2C81%2C95%2C97%2C31%2C96%2C26%2C22%2C146%2C149%2C124%2C24%2C9%2C10%2C11%2C5%2C6%2C21%2C19%2C20%2C49%2C54%2C56%2C66%2C90%2C23%2C67%2C8%2C7%2C71%2C41%2C18%2C92%2C91%2C17%2C4%2C73%2C80%2C72%2C78%2C40%2C39%2C77%2C33%2C35%2C76%2C48%2C74%2C28%2C37%2C65%2C0%2C84%2C75%2C2%2C30%2C55%2C34%2C93%2C38%2C70%2C60%2C99%2C52%2C51%2C27%2C87%2C50%2C47%2C42%2C69%2C64%2C100

47B

Line:19 Column:2057

@babel/plugin-transform-orm-classes

<https://bespokebritain.com/wp-content/themes/polaris-framework/javascripts/js-kick-starter/js-kick-starter-min.js?ver=6.1.5>

44B

Line:52 Column:18815

@babel/plugin-transform-orm-classes

N/A	Avoid large layout shifts CLS	5 elements found
-----	--------------------------------------	------------------

These DOM elements contribute most to the CLS of the page.

ELEMENT	CLS CONTRIBUTION
Welcome to Bespoke Britain, specialists in premium tour and travel experiences.... <div class="page-basic">	0.01
BOOK NOW <p class="text-right trigger-container-closed">	0.00
Welcome to Bespoke Britain We specialise in creating curated bespoke experienc... <div class="col-12 col-md-12 col-lg-12 col-xl-12 col-xxl-12" id="">	0.00
BOOK NOW 	0.00
div.col-6 > p.text-right > a.menu-icon-trigger > i.fas <i class="fas fa-bars">	0.00

N/A **Minimize main-thread work** TBT Main-thread busy for 1.2s

Consider reducing the time spent parsing, compiling and executing JS. You may find delivering smaller JS payloads helps with this.

CATEGORY	TIME SPENT
Other	520ms
Script Evaluation	294ms
Style & Layout	164ms
Rendering	97ms
Parse HTML & CSS	54ms
Script Parsing & Compilation	20ms
Garbage Collection	5ms

N/A **User Timing marks and measures** 8 user timings

Consider instrumenting your app with the User Timing API to measure your app's real-world performance during key user experiences.

NAME	TYPE	START TIME	DURATION
fbevents:start:estPageViewProcessing	Mark	1.9s	0ms
fbevents:start:estPageViewProcessing	Mark	1.9s	0ms
fbevents:end:estPageViewProcessing	Mark	1.9s	0ms
fbevents:end:estPageViewProcessing	Mark	1.9s	0ms
fbevents:start:unwantedDataProcessing_276604454097228	Mark	1.9s	0ms
fbevents:end:unwantedDataProcessing_276604454097228	Mark	1.9s	0ms
fbevents:start:validateUrlProcessing_276604454097228	Mark	1.9s	0ms
fbevents:end:validateUrlProcessing_276604454097228	Mark	1.9s	0ms

N/A

Reduce the impact of third-party code TBT

Total size was 253KB

Third-party code can significantly impact load performance. Limit the number of redundant third-party providers and try to load third-party code after your page has primarily finished loading.

THIRD-PARTY	TRANSFER SIZE	MAIN-THREAD BLOCKING TIME
GOOGLE TAG MANAGER	160KB	0ms
• https://www.googletagmanager.com/gtag/js?id=G-400LRJBPF6	93.3KB	0ms
• https://www.googletagmanager.com/gtag/js?id=UA-185370125-1	66.4KB	0ms
FACEBOOK	71.6KB	0ms
• https://connect.facebook.net/en_US/fbevents.js	58.1KB	0ms
• https://connect.facebook.net/signals/config/276604454097228?v=2.9.148&r=stable&domain=bespokebritain.com&hme=20c913bdcd4be51a752120153aa5caae3ee86c7f26cf737846e40b202aba68&exm=62%2C106%2C94%2C98%2C53%2C3%2C88%2C61%2C14%2C86%2C79%2C44%2C46%2C150%2C153%2C164%2C160%2C161%2C163%2C25%2C89%2C45%2C68%2C162%2C145%2C148%2C157%2C158%2C165%2C115%2C13%2C43%2C169%2C168%2C117%2C16%2C29%2C32%2C1%2C36%2C57%2C58%2C59%2C63%2C83%2C15%2C12%2C85%2C82%2C81%2C95%2C97%2C31%2C96%2C26%2C22%2C146%2C149%2C124%2C24%2C9%2C10%2C11%2C5%2C6%2C21%2C19%2C20%2C49%2C54%2C56%2C66%2C90%2C23%2C67%2C8%2C7%2C71%2C41%2C18%2C92%2C91%2C17%2C4%2C73%2C80%2C72%2C78%2C40%2C39%2C77%2C33%2C35%2C76%2C48%2C74%2C28%2C37%2C65%2C0%2C84%2C75%2C2%2C30%2C55%2C34%2C93%2C38%2C70%2C60%2C99%2C52%2C51%2C27%2C87%2C50%2C47%2C42%2C69%2C64%2C100	13.2KB	0ms
GOOGLE ANALYTICS	20.8KB	0ms
• https://www.google-analytics.com/analytics.js	20.8KB	0ms
MONOTYPE	547B	0ms